

**BALDOR® • RELIANCE** 

**Product Information Packet**

**UCL710**

**7.5-10 AIR OVERHP,3450RPM,1PH,60HZ,182TZ**

| Part Detail |        |             |            |             |                              |               |            |
|-------------|--------|-------------|------------|-------------|------------------------------|---------------|------------|
| Revision:   | M      | Status:     | PRD/A      | Change #:   |                              | Proprietary:  | No         |
| Type:       | AC     | Elec. Spec: | 36WG041    | CD Diagram: | CD0208                       | Mfg Plant:    |            |
| Mech. Spec: | 36M939 | Layout:     | 36LYM939   | Poles:      | 02                           | Created Date: | 02-09-2010 |
| Base:       | RG     | Eff. Date:  | 10-22-2019 | Leads:      | 2#10 A PH,3#16 B PH 30" long |               | Y          |

| Specs                           |                         |                                |                       |
|---------------------------------|-------------------------|--------------------------------|-----------------------|
| Catalog Number:                 | UCL710                  | KVA Code:                      | F                     |
| Enclosure:                      | OPEN                    | Lifting Lugs:                  | Standard Lifting Lugs |
| Frame:                          | 182TZ                   | Locked Bearing Indicator:      | Locked Bearing        |
| Frame Material:                 | Steel                   | Motor Lead Quantity/Wire Size: | 2 @ 10 AWG, A PH      |
| Output @ Frequency:             | 7.500 HP @ 60 HZ        | Motor Lead Exit:               | Pipe Or Pipe Adaptor  |
|                                 | 10.000 HP @ 60 HZ       | Motor Lead Termination:        | Flying Leads          |
| Synchronous Speed @ Frequency:  | 3600 RPM @ 60 HZ        | Motor Type:                    | 3646LC                |
| Voltage @ Frequency:            | 230.0 V @ 60 HZ         | Mounting Arrangement:          | F1                    |
| XP Class and Group:             | None                    | Power Factor:                  | 93                    |
| XP Division:                    | Not Applicable          | Product Family:                | General Purpose       |
| Agency Approvals:               | UR                      | Product Type:                  | FARM DUTY             |
|                                 | CSA                     | Pulley End Bearing Type:       | Ball                  |
| Auxillary Box:                  | No Auxillary Box        | Pulley Face Code:              | Standard              |
| Auxillary Box Lead Termination: | None                    | Pulley Shaft Indicator:        | Tapped & Key          |
| Base Indicator:                 | Rigid                   | Rodent Screen:                 | Included              |
| Bearing Grease Type:            | Polyrex EM (-20F +300F) | RoHS Status:                   | ROHS COMPLIANT        |
| Blower:                         | None                    | Shaft Extension Location:      | Pulley End            |
| Current @ Voltage:              | 31.000 A @ 230.0 V      | Shaft Ground Indicator:        | No Shaft Grounding    |

|                                       |                           |                                    |                            |
|---------------------------------------|---------------------------|------------------------------------|----------------------------|
| <b>Design Code:</b>                   | L                         | <b>Shaft Rotation:</b>             | Reversible                 |
| <b>Drip Cover:</b>                    | No Drip Cover             | <b>Shaft Slinger Indicator:</b>    | No Slinger                 |
| <b>Duty Rating:</b>                   | CONT                      | <b>Speed Code:</b>                 | Single Speed               |
| <b>Electrically Isolated Bearing:</b> | Not Electrically Isolated | <b>Motor Standards:</b>            | NEMA                       |
| <b>Feedback Device:</b>               | NO FEEDBACK               | <b>Starting Method:</b>            | Direct on line             |
| <b>Front Face Code:</b>               | Standard                  | <b>Thermal Device - Bearing:</b>   | None                       |
| <b>Front Shaft Indicator:</b>         | None                      | <b>Thermal Device - Winding:</b>   | Normally Closed Thermostat |
| <b>Heater Indicator:</b>              | No Heater                 | <b>Vibration Sensor Indicator:</b> | No Vibration Sensor        |
| <b>Insulation Class:</b>              | F                         | <b>Winding Thermal 1:</b>          | None                       |
| <b>Inverter Code:</b>                 | Not Inverter              | <b>Winding Thermal 2:</b>          | None                       |

|                          |                 |  |  |             |           |    |            |                       |   |           |   |
|--------------------------|-----------------|--|--|-------------|-----------|----|------------|-----------------------|---|-----------|---|
| <b>Nameplate NP1279L</b> |                 |  |  |             |           |    |            |                       |   |           |   |
| <b>CAT.NO.</b>           | UCL710          |  |  |             |           |    |            |                       |   |           |   |
| <b>SPEC.</b>             | 36M939W041G1    |  |  |             |           |    |            |                       |   |           |   |
| <b>HP</b>                | 7.5-10 AIR OVER |  |  |             |           |    |            |                       |   |           |   |
| <b>VOLTS</b>             | 230             |  |  |             |           |    |            |                       |   |           |   |
| <b>AMP</b>               | 31-42           |  |  |             |           |    |            |                       |   |           |   |
| <b>RPM</b>               | 3450            |  |  |             |           |    |            |                       |   |           |   |
| <b>FRAME</b>             | 182TZ           |  |  |             | <b>HZ</b> | 60 |            | <b>PH</b>             | 1 |           |   |
| <b>SER.F.</b>            | 1.00            |  |  | <b>CODE</b> | F         |    | <b>DES</b> | L                     |   | <b>CL</b> | F |
| <b>NEMA-NOM-EFF</b>      | 85              |  |  | <b>PF</b>   | 93        |    |            |                       |   |           |   |
| <b>RATING</b>            | 40C AMB-CONT    |  |  |             |           |    |            |                       |   |           |   |
| <b>CC</b>                |                 |  |  |             |           |    |            | <b>USABLE AT 208V</b> |   |           |   |
| <b>DE</b>                | 6206            |  |  | <b>ODE</b>  | 6205      |    |            |                       |   |           |   |
| <b>ENCL</b>              | OPEN            |  |  | <b>SN</b>   |           |    |            |                       |   |           |   |

|                          |                 |
|--------------------------|-----------------|
| <b>Nameplate NP1263L</b> |                 |
| <b>CAT.NO.</b>           | UCL710          |
| <b>SPEC.</b>             | 36M939W041G1    |
| <b>HP</b>                | 7.5-10 AIR OVER |
| <b>VOLTS</b>             | 230             |
| <b>AMP</b>               | 31-42           |
| <b>RPM</b>               | 3450            |
| <b>FRAME</b>             | 182TZ           |
| <b>HZ</b>                | 60              |
| <b>PH</b>                | 1               |
| <b>SER.F.</b>            | 1.00            |
| <b>CODE</b>              | F               |
| <b>DES</b>               | L               |
| <b>CL</b>                | F               |
| <b>NEMA-NOM-EFF</b>      | 85              |
| <b>PF</b>                | 93              |
| <b>RATING</b>            | 40C AMB-CONT    |
| <b>CC</b>                | USABLE AT 208V  |
| <b>DE</b>                | 6206            |
| <b>ODE</b>               | 6205            |
| <b>ENCL</b>              | OPEN            |
| <b>SN</b>                |                 |

| Parts List  |  |          |
|-------------|--|----------|
| Part Number | Description                              | Quantity |
| SA190938    | SA 36M939W041G1                          | 1.000 EA |
| RA178603    | RA 36M939W041G1                          | 1.000 EA |
| OC3040F18SP | 7YL OIL CAP 40MFD/370V                   | 1.000 EA |
| EC1216C06SP | ELEC CAP, 216-259 MFD, 250V, 2.06D X 4.  | 2.000 EA |
| HA6021A01SP | ADAPTOR, MACH                            | 1.000 EA |
| 51XB1016A07 | 10-16 X 7/16 HXWSSLD SERTYB              | 2.000 EA |
| 36EP3204C00 | MASTER ODE,205 BRG,GRSR,GRSR             | 1.000 EA |
| HA1103A08   | RODENT SCREEN, 36 FRAME, OPEN, FRONT END | 1.000 EA |
| 51XW1032A06 | 10-32 X .38, TAPTITE II, HEX WSHR SLTD S | 4.000 EA |
| HW1000A10   | #10 FLAT WASHER (SAE)                    | 4.000 EA |
| HW4500A19   | 1/4-28X1/4 SLOTTED PLUG F/S              | 2.000 EA |
| 13XF0832A08 | 8-32 X.50 PAN HD,SLTD, TYPE F SCREW, ZIN | 2.000 EA |
| SP1008A01   | BAFFLE, MODEL 36 & 37                    | 1.000 EA |
| 51XB1016A05 | 10-16X5/16HX WA SL SR TYB (F/S)          | 4.000 EA |
| HW5100A05   | WVY WSHR F/205 & 304 BRGS                | 1.000 EA |
| 36EP3205E00 | MASTER DE,206 BRG,1.438SH,GRSR,GRSR,LCK  | 1.000 EA |
| HA1103A10   | RODENT SCREEN, 36 FRAME, OPEN, PULLEY EN | 1.000 EA |
| 51XW1032A06 | 10-32 X .38, TAPTITE II, HEX WSHR SLTD S | 4.000 EA |
| HW1000A10   | #10 FLAT WASHER (SAE)                    | 4.000 EA |
| HW4500A19   | 1/4-28X1/4 SLOTTED PLUG F/S              | 2.000 EA |
| 10XN2520A20 | 1/4-20X 1 1/4 HEX HD X                   | 2.000 EA |
| HW1001A25   | LOCKWASHER 1/4, ZINC PLT .493 OD, .255 I | 2.000 EA |
| XY2520A12   | 1/4-20 HEX NUT, DIRECTIONAL SERRATIONS   | 4.000 EA |
| HW2501E18   | KEY, 1/4 SQ X 2.000                      | 1.000 EA |

| Parts List (continued) |  |          |
|------------------------|--|----------|
| Part Number            | Description                              | Quantity |
| HA7000A02              | KEY RETAINER RING, 1 1/8 DIA, 1 3/8 DIA  | 1.000 EA |
| 85XU0407S04            | 4X1/4 U DRIVE PIN STAINLESS              | 2.000 EA |
| LB1001                 | LABEL, GREASE-EXXON POLYREX EM           | 1.000 EA |
| HW3200A01              | 3/8-16X3/4 I-BLT WELDED F/S              | 1.000 EA |
| MJ1000A02              | GREASE, MOBIL POLYREX EM - 124047        | 0.050 LB |
| LB1115N                | LABEL,LIFTING DEVICE (ON ROLLS)          | 1.000 EA |
| LD5000A45              | LEAD ASSY, ML1400DF10 W/#10 RING 36"     | 1.000 EA |
| SP5172A13              | 37 TYPE L TORQ STAT SWITCH LEAD ASSEMBLY | 1.000 EA |
| WD1000A15              | 3-520132-2 AMP FLAG (4M/RL NON-CANC/NON- | 6.000 EA |
| 35CB4802A02SP          | CAPACITOR COVER, STAMPED X               | 2.000 EA |
| HA3101A28              | THRUBOLT 1/4-20 X 12.500 OHIO ROD        | 4.000 EA |
| MG1025C02              | WILKOFASST SG, 787.105, TAN              | 0.022 GA |
| LB1119N                | WARNING LABEL                            | 1.000 EA |
| LC0208                 | CONNECTION LABEL                         | 1.000 EA |
| NP1279L                | ALUM FARM DUTY UL CSA CC                 | 1.000 EA |
| NP1263L                | AUX, GP, ALUM, CC, LASER ETCHED          | 1.000 EA |
| 36PA1001               | PKG GRP, PRINT PK1017A06                 | 1.000 EA |
| MN416A01               | TAG-INSTAL-MAINT no wire (1200/bx) 3/19  | 1.000 EA |
| FE-0000001             | ZRTG FE ASSEMBLY                         | 1.000 EA |
| PE-0000001             | ZRTG PE ASSEMBLY                         | 1.000 EA |

| <b>Accessories</b> |                    |                   |
|--------------------|--------------------|-------------------|
| <b>Part Number</b> | <b>Description</b> | <b>Multiplier</b> |
| 36-3403            | C FACE KIT         | A8                |
| 36EP1405A09SP      | D-FLANGE KIT       | A8                |

**AC Induction Motor Performance Data**

Record # 10677 - Typical performance - not guaranteed values

|                               |                     |                        |
|-------------------------------|---------------------|------------------------|
| <b>Winding:</b> 36WGW041-R001 | <b>Type:</b> 3646LC | <b>Enclosure:</b> OPAO |
|-------------------------------|---------------------|------------------------|

| Nameplate Data        |                 |              |    | 230 V, 60 Hz:<br>Single Voltage Motor |                             |
|-----------------------|-----------------|--------------|----|---------------------------------------|-----------------------------|
| Rated Output (HP)     | 7.5-10 AIR OVER |              |    | Full Load Torque                      | 15 LB-FT                    |
| Volts                 | 230             |              |    | Start Configuration                   | direct on line              |
| Full Load Amps        | 31-42           |              |    | Breakdown Torque                      | 36 LB-FT                    |
| R.P.M.                | 3450            |              |    | Pull-up Torque                        | 20 LB-FT                    |
| Hz                    | 60              | Phase        | 1  | Locked-rotor Torque                   | 22 LB-FT                    |
| NEMA Design Code      | L               | KVA Code     | F  | Starting Current                      | 210 A                       |
| Service Factor (S.F.) | 1               |              |    | No-load Current                       | 8.4 A                       |
| NEMA Nom. Eff.        | 85              | Power Factor | 93 | Line-line Res. @ 25°C                 | 0.206 Ω A Ph<br>1.09 Ω B Ph |
| Rating - Duty         | 40C AMB-CONT    |              |    | Temp. Rise @ Rated Load               |                             |

Load Characteristics 230 V, 60 Hz, 10 HP

| % of Rated Load | 25    | 50   | 75   | 100  | 125  | 150  |
|-----------------|-------|------|------|------|------|------|
| Power Factor    | 82    | 91   | 94   | 95   | 94   | 94   |
| Efficiency      | 71    | 81.4 | 84.3 | 84.6 | 83.5 | 81.5 |
| Speed           | 3573  | 3549 | 3522 | 3492 | 3457 | 3414 |
| Line amperes    | 13.97 | 21.8 | 30.8 | 40.6 | 51.4 | 63.8 |

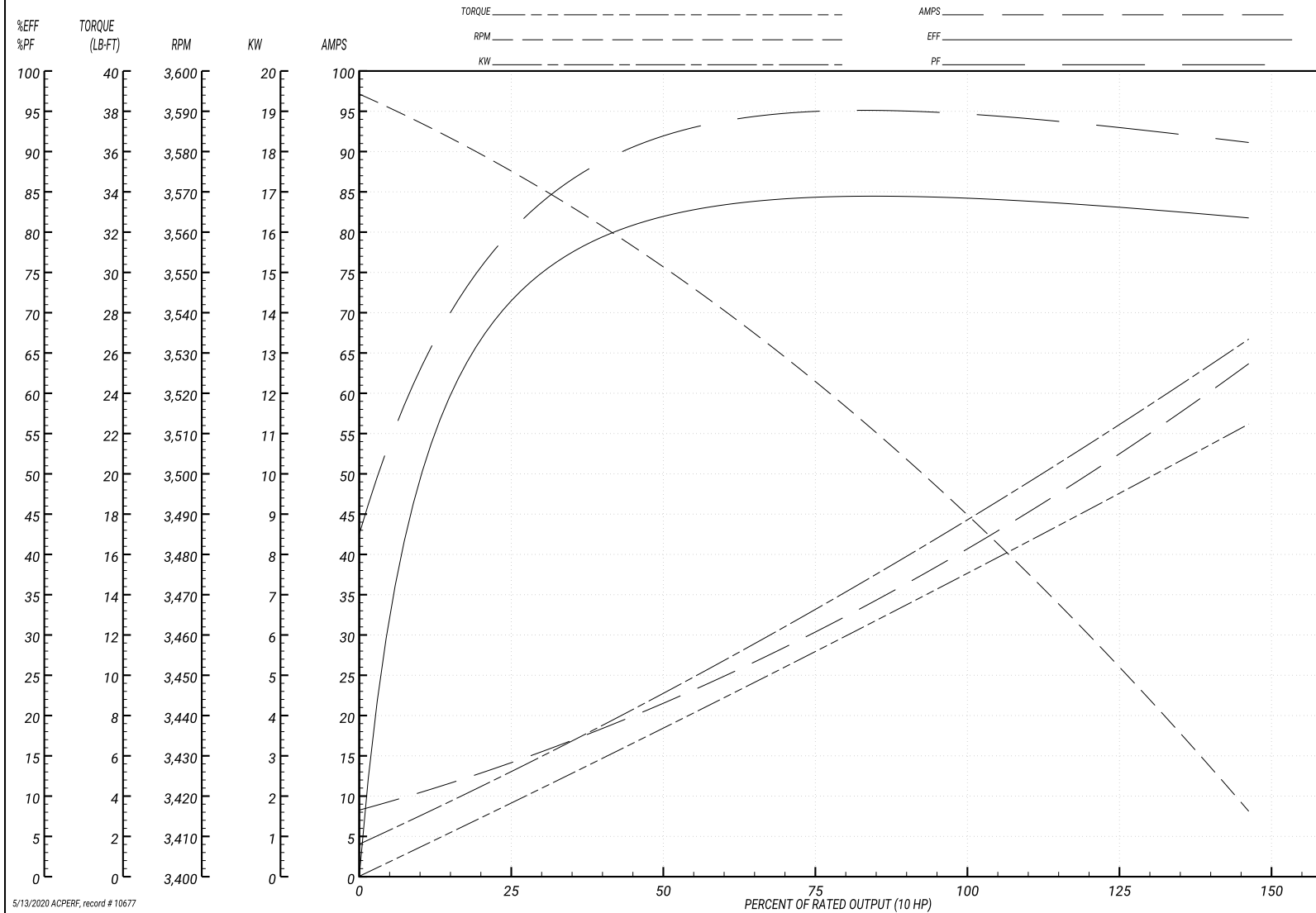
Performance Graph at 230V, 60Hz, 10.0HP Typical performance - Not guaranteed values

ABB Motors and Mechanical Inc.

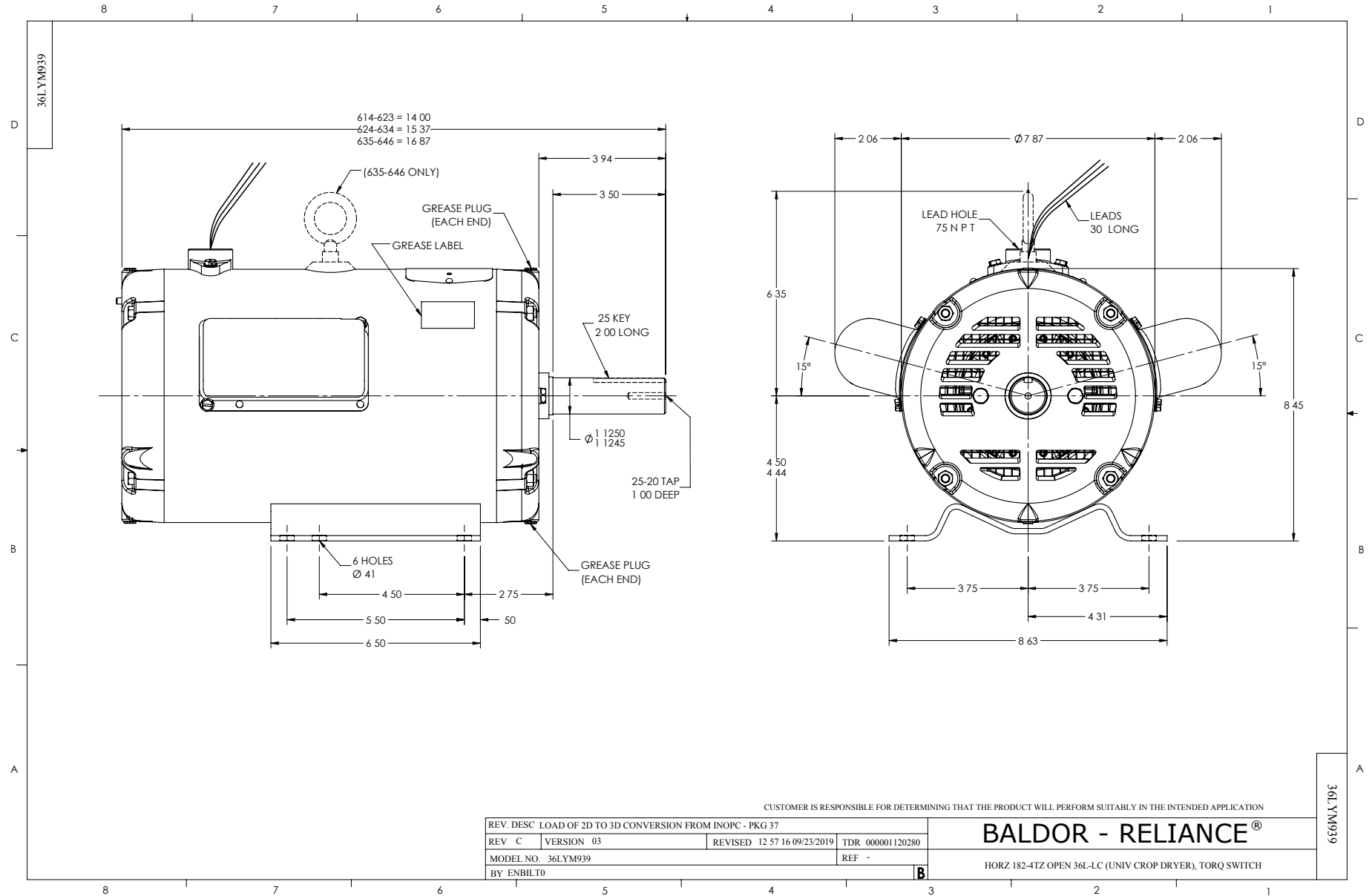
WINDING # 36WGW041

Typical performance - not guaranteed values.

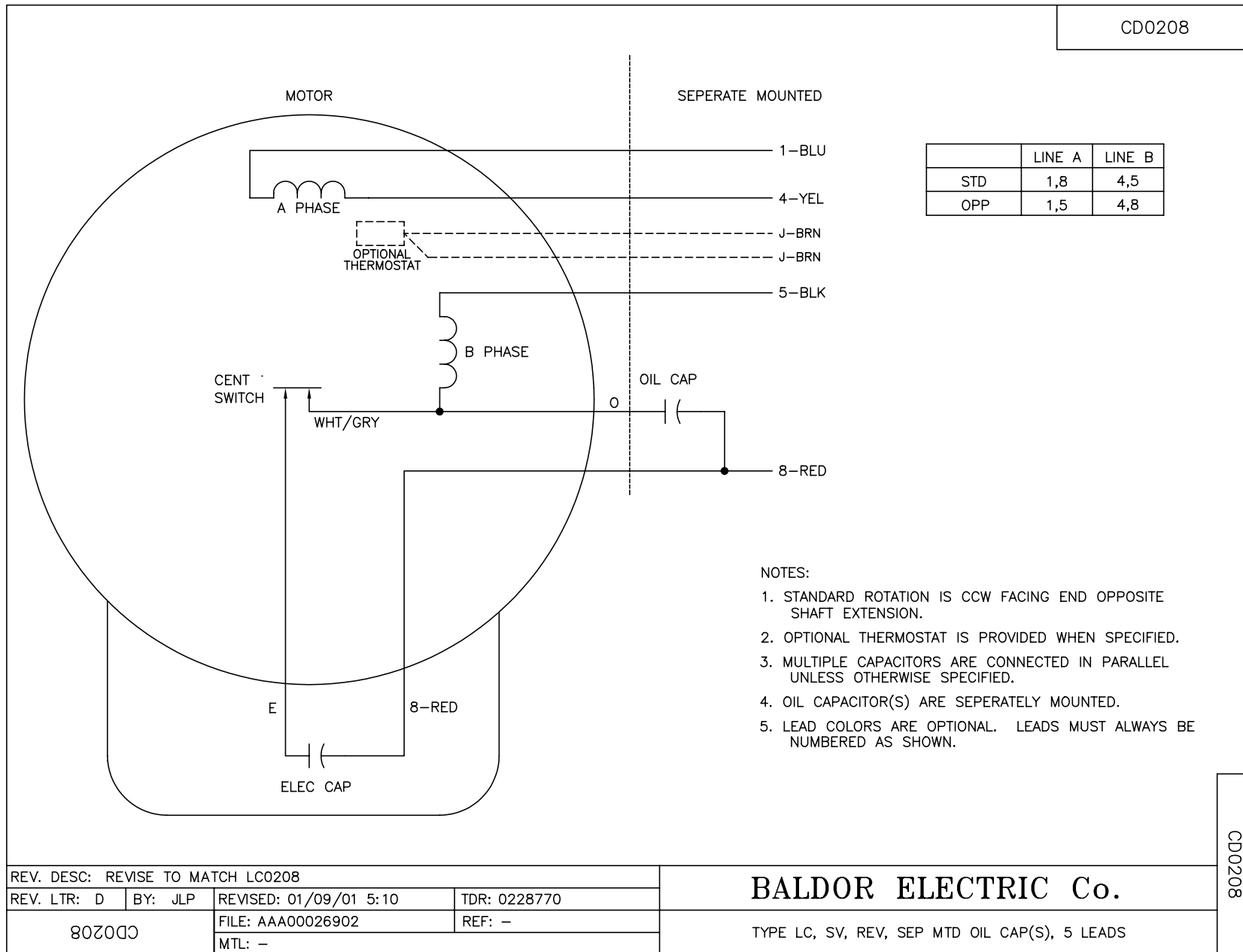
10 HP 1 PH 60 HZ 3450 RPM 230 V 3646LC  
 TORQUES(LB-FT): PO=36 PU=20 LR=22 LRA=210



5/13/2020 ACPERF, record # 10677



CD0208



|                                   |         |                        |              |
|-----------------------------------|---------|------------------------|--------------|
| REV. DESC: REVISE TO MATCH LC0208 |         |                        |              |
| REV. LTR: D                       | BY: JLP | REVISED: 01/09/01 5:10 | TDR: 0228770 |
| 80200                             |         | FILE: AAA00026902      | REF: -       |
|                                   |         | MTL: -                 |              |

**BALDOR ELECTRIC Co.**

TYPE LC, SV, REV, SEP MTD OIL CAP(S), 5 LEADS

CD0208